

Arktis Laser Product Datasheet

SafetyCast

Arktis Laser Part Number:
HSCB025AX

Similar Products:

For information about the other lasers in this product family visit:

<http://www.arktislaser.com/HSCHSC>

Ordering:

Order Online Now or Request Quote:

<http://www.laserglow.com/HSCB025AX>



Overview:

Safety Cast Systems are the ideal solution for adding bright, visual warnings in areas where conventional wall and floor markings are easily missed or obstructed. Features include high-output lamps and rugged construction. Floor spot projections are perfect for heavy traffic areas that do not show markings in certain lighting conditions or due to wear. A line projection outlines a safety warning around heavy equipment and machinery where additional safety is required.

Key Features:

- *Color Options:* Red/Green/Blue
- *Expected Life:* 50,000 hours
- *Projection Type:* Dot/Line/Arrow
- *Package Includes:* LED mounted into enclosure with bracket

The Hazard Safety Projection Series was developed to address the safety concerns in warehouses, dock and loading areas, or any industrial workplace area where heavy mobile equipment shares workspace with pedestrians. These products were researched and developed by Laserglow in conjunction with some of the leading lighting manufacturers in the industry. Some of the products in this series are also ideal guidance systems for dock approach, load stacking and off-loading.

Specifications:

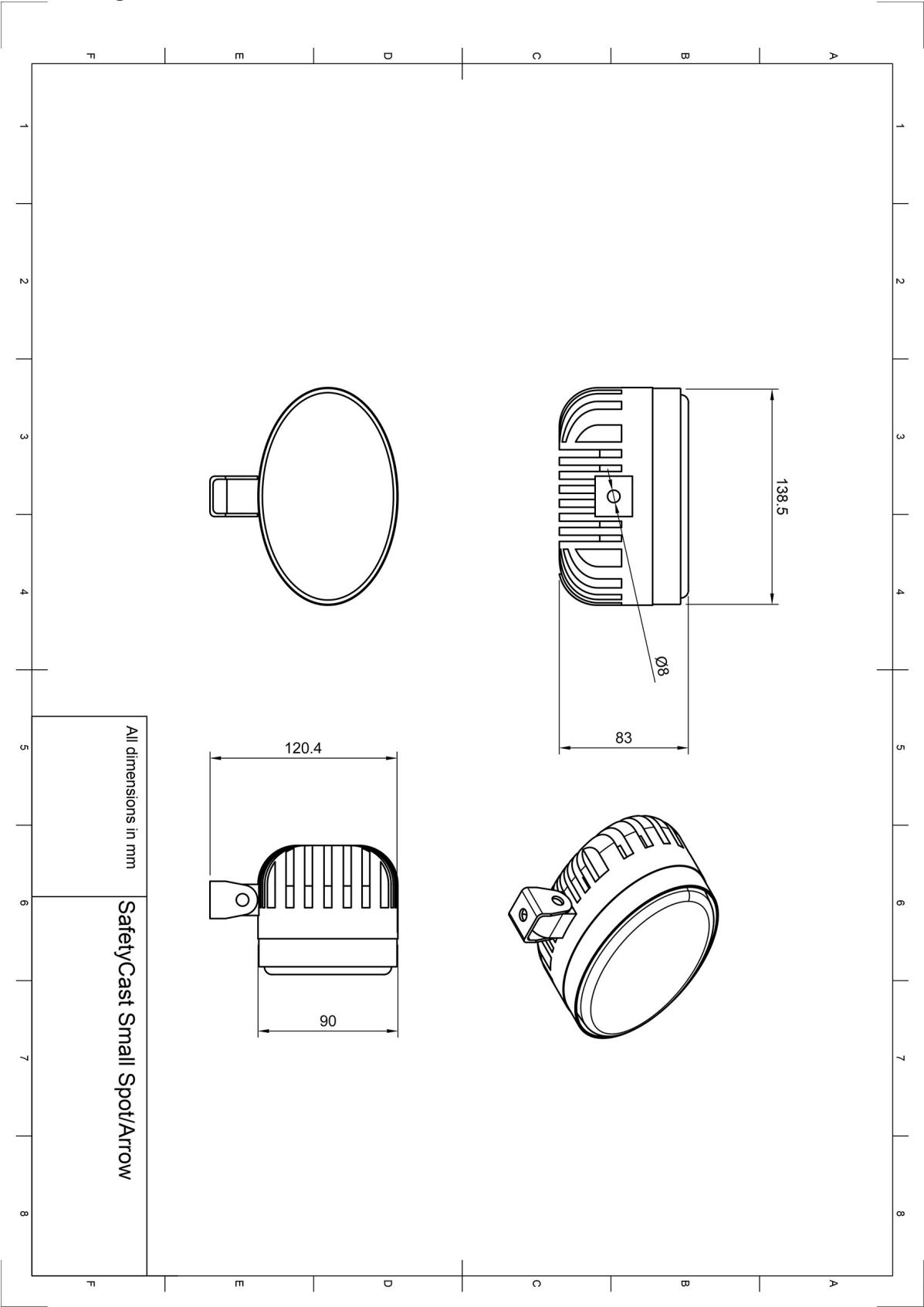
This spec sheet has been generated specifically for part number HSCB025AX, per your request, and data for the entire series is also displayed for your reference. The specs which are specific to HSCB025AX have been highlighted below in **red + bold**.

Output Power (W)	6	6	9	18	24, 72, 120, 135	27
Projection Fan Angle (°, full angle)	6			100	6, 50, 100	6
IP rating	65	65	65	65	65	65
Storage Temperature Range (°C)	-20 to 40	-20 to 40	-20 to 40	-20 to 40	-20 to 40	-20 to 40
Total Power Consumption (W)	6	6	9	18	18, 72, 120, 135	27
Standard Warranty (months)	12	12	12	12	12	12
MTTF (operational hours)	50000	50000	50000	50000	50000	50000
Weight of Product or Laser Head (kg)	1.4	1.4	1.4	2	5.4	2.3
Dimensions of Product or Laser Head (mm)	120 (l) x 90 (w) x 140 (h)	120 (l) x 90 (w) x 140 (h)	100 (l) x 70 (w) x 130 (h)	67 (l) x 65 (w) x 156 (h)	228 (l) x 100 (w) x 234 (h)	140 (l) x 87 (w) x 170 (h)
Power Supply	10-80 VDC Input, 12-48 VDC Input	10-80 VDC Input, 12-48 VDC Input	10-80 VDC Input, 12-48 VDC Input	10-80 VDC Input, 12-48 VDC Input	10-80 VDC Input, 12-48 VDC Input	10-80 VDC Input, 12-48 VDC Input

CW: All specifications are based on performance at full output power and after the specified warmup period. Output characteristics may change if the laser is run at a different power level.




Q-Switched: Specifications are based on the laser pulsing at the specified design frequency. Output characteristics may change if the laser is run at a different frequency.

Dimensional Drawing - Laser Form Factor: SC2:



Accessories:

The most popular accessories for model HSCB025AX are shown below. For additional details regarding these or other accessories please see our website or contact us directly.

Part Number	Description	
 APH25VAXX	SafetyCast Class 2 Power Supply 25W Full Details: www.arktislaser.com/APH	
 HSTCRB1XX	Smart Trigger kit with Retroreflective Beam Break Sensor 30 meter range Retroreflector included Full Details: www.arktislaser.com/HST	
 APH90VAXX	SafetyCast Class 2 Power Supply 90W Full Details: www.arktislaser.com/APH	

FOR MORE INFORMATION PLEASE CONTACT:

Arktis Laser
112 Elizabeth St, Unit 5-331, Toronto, ON, Canada M5G 1P5
Tel. (416) 886-1178 Fax (647) 874-7129
sales@arktislaser.com www.arktislaser.com

E&OE: Data included in this sheet may be subject to change without notice.

Please confirm critical specifications with our staff prior to ordering.