

LBS-532-TD-XX Brightline PRO Dot (Green)

The LBS-532-TD Series of dot-generating laser modules will provide you with a quick and precise reference point for any alignment application. Designed to run in an industrial setting, these laser modules will perform 24 hours a day for reliable positioning and measurement in a large variety of tasks. The adjustable focus and low divergence of the Brightline PRO series make these lasers a great choice for medium to long range alignment applications, and at close range they can produce a dot as small as 0.25mm (less than 1/64") for sensitive jobs requiring high precision and repeatability. The small form factor and only one moving part means that these lasers can be mounted almost anywhere and are perfect for integration into portable devices and other equipment.



Feature Overview

- Competitively priced
- Extremely high visibility: green is 5-10 times more visible than a red laser
- Output power available from 5-80 mW
- Low divergence ensures precision at various working distances
- Adjustable focus for line thickness adjustment and extreme precision at short working distances
- AC power supply and standard mounting bracket available at no charge
- Can also be powered by direct 3.0 VDC (300-800mA draw)
- Input port for TTL-modulation signal (electronically trigger the laser up to 200 Hz)

Key Feature: Low Divergence

The divergence of a laser (measured in milliradians, or mrad) will determine the precision (diameter) of the laser dot at a given distance. The Brightline PRO series features a 0.1 mrad full-angle divergence, which means the minimum achievable diameter will increase by only 0.1 mm for every 1 meter travelled.

SPECIFICATIONS:

Dimensional Drawing	a	b	c	d
Model	LBS-532-TD-5	LBS-532-TD-20	LBS-532-TD-40	LBS-532-TD-80
Wavelength (nm)	532	532	532	532
Output Power (mW)	~5	~20	~40	~80
Beam thickness at aperture (mm)	3.0	3.0	3.0	3.0
Beam Divergence (mrad)	0.1	0.1	0.1	0.1
Beam Mode (before optics)	Near TEM ₀₀	Near TEM ₀₀	Near TEM ₀₀	Near TEM ₀₀
Focus Adjustable?	Yes	Yes	Yes	Yes
TTL Modulation	≤200 Hz (0-5 VDC signal)	≤200 Hz (0-5 VDC signal)	≤200 Hz (0-5 VDC signal)	≤200 Hz (0-5 VDC signal)
Operating Voltage (V)	3 V DC	3 V DC	3 V DC	3 V DC
Operating Current (mA)	≤300	≤500	≤600	≤700
Operating temperature (°C)	15 - 35	15 - 35	15 - 35	15 - 35
Storage Temperature (°C)	-40 to +80	-40 to +80	-40 to +80	-40 to +80
Expected Life (hours)	≥5000	≥5000	≥5000	≥5000
Warranty	6 months	6 months	6 months	6 months

DANGER!

CLASS IIIB LASER COMPONENT

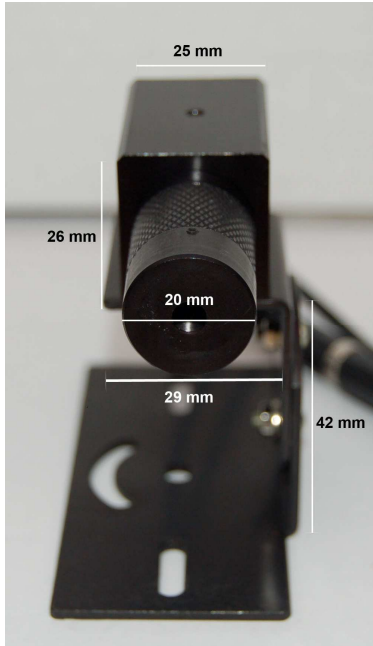
**Laser radiation emitted from the aperture of this device.
Avoid direct or reflected exposure to the beam.
Wavelength: 532nm Output power: <100mW
Device is intended as a component for industrial use only.**

DIMENSIONAL DRAWINGS (please refer to model number in specifications chart above):

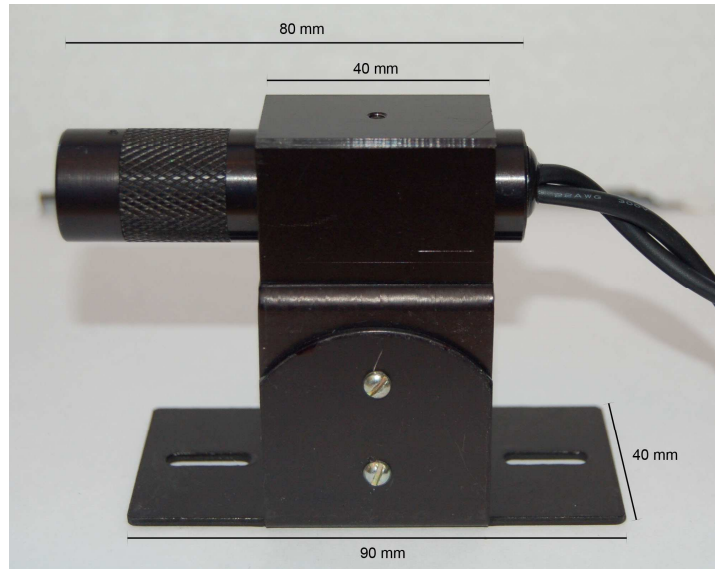
NOTE: Laser (cylindrical part) is shown installed in mounting block which, in turn, is installed on a mounting bracket. Each of these parts can easily be separated from each other.

a) LBS-532-TD-5 and LBS-532-TD-20

Front view

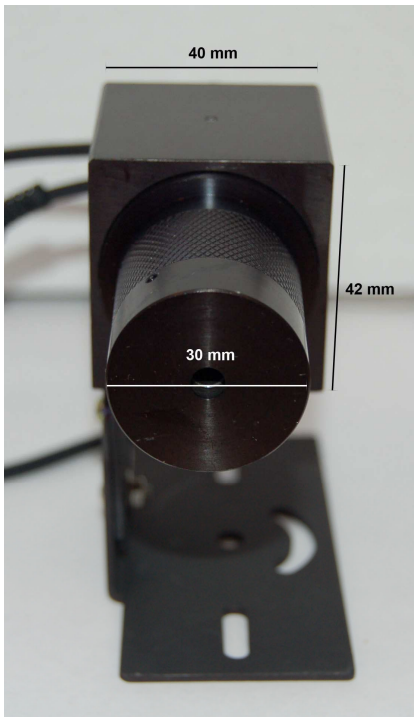


Side view

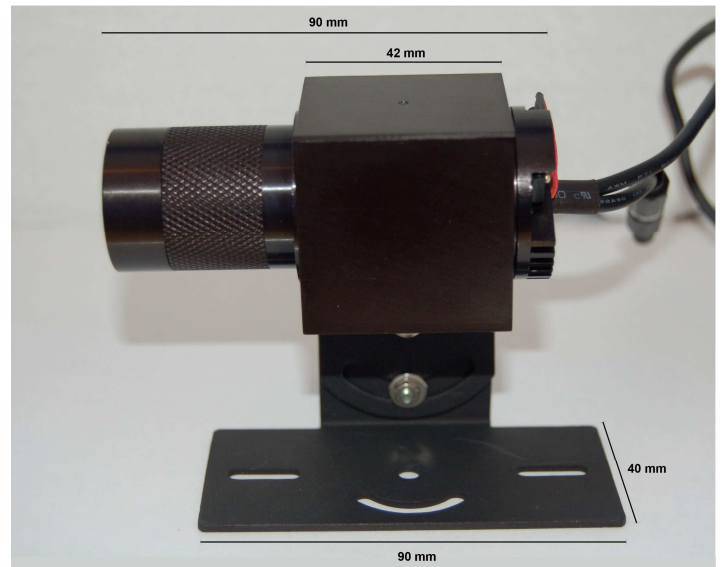


b) LBS-532-TD-80

Front view

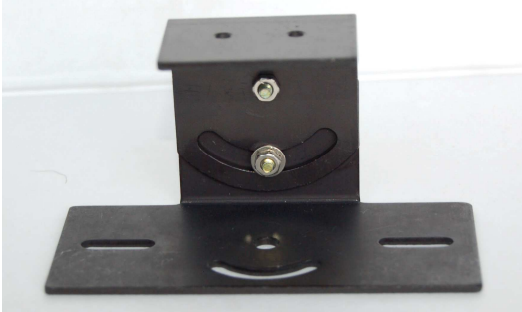


Side view



MOUNTING OPTIONS:

Standard Mounting Bracket
(no charge, upon request)



Deluxe Mounting Bracket
(\$29)



FOR FURTHER INQUIRIES PLEASE CONTACT:

LASERGLOW TECHNOLOGIES

216-5 Adrian Ave.
Toronto, ON, M6N5G4
Canada

Tel. (416) 729-7976

Fax (480) 247-4864

sales@laserglow.com

www.laserglow.com